



DELHI
PUBLIC
SCHOOL
Kolar Road

SUMMER *Holidays*

HOMework



CLASS
VIII



PREFACE

Dear Parents and Students,

It is summer vacation time again, a time to relax as well as to remain fruitfully occupied in various scholastic and co-scholastic areas. Keeping this in mind, we have designed interesting Projects / Assignments to be completed during the summer vacation. This would encourage in-depth learning, strengthen concepts and prepare ground for improved academic output.

The Holiday Home Work Projects are 'Art Integrated' as per the CBSE Guidelines. This art-integrated approach will help our students understand the diverse Indian art and culture and they will imbibe the Indian ethos through integration of Indian art and culture.

The states which are integrated by CBSE are **Madhya Pradesh and Bihar.**

These projects will be assessed as Subject Enrichment Activity for Term I.

As parents, kindly motivate and lend support to your children and ensure that they complete the given work well-in-time and to the best of their ability. Your encouragement can actually make a huge difference to the ultimate learning outcome of these projects.

Guidelines for Holiday Home Work: -

- All projects / Homework to be done as specified.
- Work to be done neatly, creatively and relevant to the question given.
- Parental supervision is advised and required while surfing the internet.



**Principal
DPS Kolar Road**

ENGLISH

Task 1: Theme: Gems of Bihar

Choose either Aryabhata or Ustad Bismillah Khan and write a paragraph in about 150 words.

Include:

- Introduction – who he is and why famous
- Birthplace (Bihar)
- Major contribution
- One challenge faced
- Value/lesson learned
- Conclusion

Instructions:

- Write neatly, present creatively and add attractive borders.

Task 2- Vocabulary Enrichment-

Cut a short newspaper article and choose 8–10 new words from it.

For each word:

- Write the meaning
- Write one sentence of your own

Then write a short paragraph (80–100 words) using at least 5 of these words.

HINDI

पर्यटन निगम (टूर एंड ट्रेवल्स कंपनी) के लिए मध्य प्रदेश या बिहार के पर्यटन स्थलों पर घूमने के लिए एक आकर्षक विज्ञापन तैयार कीजिए। जिसमें कंपनी का नाम, आकर्षक संदेश, शहरों के स्थलों के नाम, विशेषताएँ आदि जानकारी शामिल हों। (Use A4 sheets)

FRENCH

1. Prepare a colourful chart (Size - A4) depicting passé composé with the verb "être". Write all the 17 verbs along with their meanings and past participles (participe passé).
2. Make a ppt of 8-10 slides on the French speaking world (Le monde francophone - Les pays, la culture, les faits intéressants etc.). Kindly send it to < sujataroy.patranabis@dpskolar.org > (students of section 8-D) < tanaya.khare@dpskolar.org > (students of section 8-C)

SANSKRIT

एक समय की बात है, बिहार के एक छोटे से गाँव में एक बगुला रहता था। वह बगुला बहुत ही चतुर और होशियार था। वह अपनी चतुराई से अपने शिकार को पकड़ता था और अपना पेट भरता था।

एक दिन, वह बगुला गंगा नदी के किनारे बैठा था, जब उसने एक मछली को देखा। वह मछली बहुत ही सुंदर और स्वादिष्ट थी। बगुले ने सोचा कि वह मछली को पकड़कर अपना पेट भर सकता है।

लेकिन जब बगुला मछली को पकड़ने के लिए आगे बढ़ा, तो उसने देखा कि मछली बहुत ही चतुर है। वह मछली बगुले को देखकर तुरंत पानी में कूद गई और अपनी जान बचाई।

.....

इसके आगे की कहानी को सभी छात्र स्वयं के रचनात्मक एवं बुद्धि कौशल के आधार पर आठ से दस वाक्य में पूर्ण करेंगे एवं उन वाक्यों में से किन्हीं भी पांच वाक्य का संस्कृत में अनुवाद करेंगे ।

नोट - यह गृहकार्य स्कैप बुक (Scrapbook) में करें ।

MATHEMATICS

“Mathematics is magical -turn a big number into something smaller with just a root”

Prepare a working model on the theme “Exploring the magic of Roots”.

- Even Roll Numbers: Make a colorful and creative Square root clock.
- Odd Roll Numbers : Make a colorful and creative Cube root clock.



- Write properties of square and cube numbers.
- Write real life applications of Square and cube numbers.
- Make a chart depicting at least five interesting square number patterns.

Instructions:

- Submit working model on 25.6.2026.
- Ensure your name, class section and Roll number is neatly written on the cover page.
- Decorate cover page by colorful Madhubani art of Bihar.
- Complete the worksheet neatly on A4 ruled sheets and submit it in a transparent file folder by 22nd June 2026.**

ASSIGNMENT WORKSHEET
HOLIDAY HOMEWORK
CLASS VIII

In the following question Q 1 to Q 4, a statement of assertion (A) is followed by a statement of reason (R). Choose the correct option.

- a. Both assertion (A) and reason (R) are true and reason (R) is the correct explanation of assertion (A).
- b. Both assertion (A) and reason (R) are true but reason (R) is not the correct explanation of assertion (A).
- c. Assertion (A) is true but reason (R) is false.
- d. Assertion (A) is false but reason (R) is true.

Q1) Assertion (A): 3 is the smallest number by which 243 should be multiplied to make it a perfect cube.

Reason (R): In the prime factorisation method, the prime factors should be in triplets to form a perfect cube.

Q2) Assertion (A): $\sqrt[3]{5832} = 18$

Reason (R): If a number has 2 at its ones place, the cube of that number has 8 at its ones place.

Q3) Assertion (A): 25,000 is not a perfect square.

Reason (R): The number of zeros in 25,000 is not even.

Q4) Assertion (A): The difference between 8.02×10^{11} and 6.5×10^{10} is 73.7×10^{11} .

Reason (R): Exponents can be added or subtracted by expressing them in their standard forms.

SUBJECTIVE TYPE QUESTIONS:

Q5) The area of a square park is equal to the area of a rectangular field of length 192 m and breadth 108 m. Find the length of the side of the park.

Q6) About 40,000 litres of milk is packed in few containers in such a manner that the quantity of milk in each container is equal to the number of containers. Find the number of containers and the quantity of milk in each container.

Q7) The product of two numbers is 80,000. If one number is double the other, find the numbers.

Q8) The members of a society planted 3364 plants in all. Each member planted as many plants as the number of members in the society. Find the number of members in the society.

Q9) 2025 gifts are to be packed in boxes such that each box contains as many gifts in it as the number of boxes. Find the number of boxes and the number of gifts in each box.

- Q10) The area of a square field is 2116 sq m. Find its perimeter.
- Q11) The students of a school collectively sold tickets worth ₹3,02,500 for their school carnival. If the cost of each ticket is equal to the total number of students in the school, find the cost of one ticket.
- Q12) Sunil tried to arrange 972 bottles in equal number of rows and columns. How many rows are possible How many bottles will be left out in this arrangement?
- Q13) The area of a square handkerchief is 268.96 sq cm. Find the length of side of the handkerchief.
- Q14) 5 times a number k is the square of the natural number 75. Find k.
- Q15) Evaluate the following: $[6+\sqrt{144}]^3$
- Q16) Three numbers are in the ratio 2: 3: 4. The sum of their cubes is 0.334125. Find the numbers.
- Q17) Find the smallest number by which 24,696 should be multiplied to make it a perfect cube.
- Q18) Is 4500 a perfect cube? If not, make it a perfect cube by dividing it by the smallest number possible.
- Q19) The length of one side of a cubical box is 2.4 cm. Find its volume in cubic mm.
- Q20) The volume of a cubic dice is 2.744 cubic units. Find the length of its side.
- Q21) The product $864 \times n$ is a perfect cube. What is the smallest possible value of n?
- Q22) A metallic cuboid with dimensions of 16 cm x 8 cm x 4 cm was melted and recast into a cube. What is the length of the edge of the cube?
- Q23) Find the value of b, if $7^{-5} \times b^{-5} = 91^{-5}$.
- Q24) Which of the following has more values: number of seconds in a day or number of minutes month?
- Q25) A frog lays 5 eggs per day. How many eggs will be there after 3 days if the number of eggs increase power of 2 everyday?
- Q26) By what number should $(-25)^{-1}$ be divided so that the quotient will be equal to $(-5)^{-1}$?

Case Study Questions

- Q27) The distance between the Sun and the Earth is 1.496×10^{11} m and that between the Earth and the Moon is 3.84×10^8 m. Sunlight takes 8 minutes to reach Earth. During an eclipse, the Sun, Moon, and Earth lie in a straight line. In a solar eclipse, the Moon lies between the Sun and the Earth and during a lunar eclipse, the Earth lies between the Sun and Moon.
- What will be the distance between the Sun and Moon during a solar eclipse?
 - What will be the distance between the Sun and Moon during a lunar eclipse?
 - Find the speed of sunlight.

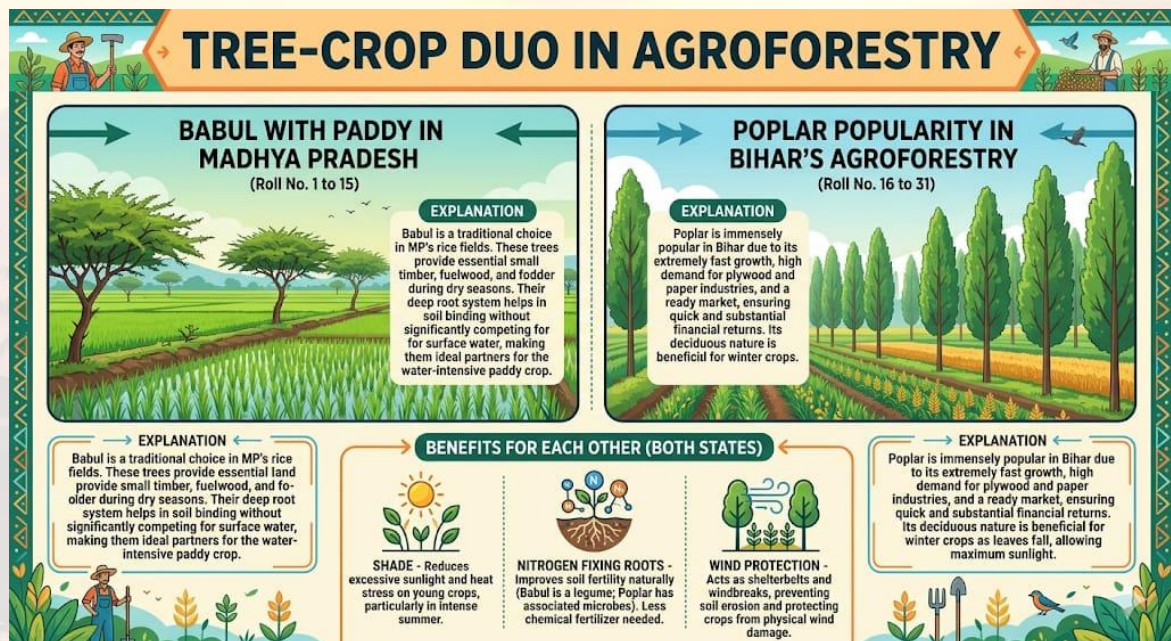
- Q28) Sikha was studying the sizes of different cells. She found that the sizes of an onion cell, a cheek cell, and a red blood cell are 0.000015 m, 0.0000075 m, and 0.000006 m, respectively. She wanted to compare their sizes. So she first expressed them in their standard forms and compared their sizes.
- Write the standard forms of the sizes of all these cells.
 - Arrange the cells in the decreasing order of their sizes.
 - Find the ratio of the size of the onion cell to that of the cheek cell.
- Q29) Mr John is planning some renovation work in his house. He wants to change the mosaic flooring of his drawing room, which has an area of 1800 cm^2 . He selected square-shaped glazed tiles of 5 cm side. He also wants to build a 10 cm long staircase outside of the wall.
- If the length of his room is twice that of its breadth, what is the side of his drawing room?
 - How many full tiles will be used for the flooring of the room?
 - If the distance of the staircase from the wall is 6 cm, what will be its height?
- Q30) Rainwater harvesting is the need of the hour to save water. The basic principle of the rainwater harvesting system involves capturing rainwater that falls on rooftops or other surfaces, channelling it through gutters and downspouts and then directing it into a storage tank. This method of water conservation helps reduce dependence on municipal water supplies, lowers water bills, and promotes sustainable water management practices. The capacity of the tank depends on the amount of rainfall in that area. Rohan lives in desert areas of Rajasthan. He wants to install a cubical tank of 8000 capacity. He knows that, 1 cubic metre is equivalent to 1000 L.
- He wants to find the side of the tank. What will he do to find the side from the tank whose capacity is given?
 - Find the side of the tank.
 - What are the different methods used to find the cube root of a number? Give one example each.

SCIENCE

“The best farming grows more than crops—it grows harmony with nature.”

Agroforestry is a sustainable farming practice where trees, crops, and sometimes livestock are grown together on the same land. This method improves soil health, increases farmers' income, and protects the environment.

- Create a colourful infographic showing the biological and chemical synergies of agroforestry models.
- Mention three ways in which the plants help each other like shade, nitrogen fixing roots, wind protection in both the states.
- Why is Babul grown with Paddy in MP? Explain. **(For Roll no.1 to 15)**
- Why is Poplar popular in Bihar's Agroforestry? Explain. **(For Roll.no.16 to 31)**



SOCIAL SCIENCE

'Don't stop Exploring and Discover more'

This summer turn your attention to cultural practices in Madhya Pradesh and Bihar. Write about mindful practices, for example, like the use of natural resources, responsible Tourism, Eco Friendly Idols during Festivals in these states.

Make a brief write up, add inspiring quotes, and include pictures to make the project appealing. Make a creative cover page depicting the rich art of either of the two states.

Material required - Three A4 size pages, pictures, colours.

COMPUTER SCIENCE

Let's Design with Tinkercad

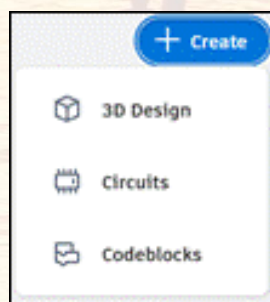
Activity: Design any one 3D model of the following

- 1) Coffee Mug
- 2) Keychain with your name
- 3) Car
- 4) Fruit Basket

Purpose: To experience how a 3D model of any object is designed

Steps to do this activity:

- 1) Open tinkercad.com in any browser (Google chrome, Microsoft Edge etc.)
- 2) Click on Login button given at the top right corner of the window and choose Personal Account option to login
- 3) Enter your Gmail id and password and log in.
- 4) Click on Create button and select 3D Design option



- 5) Refer to Page No.67 to 73 of your computer book to revise the steps of creating a 3D model of a spanner and follow these steps to create the 3D model of above given options accordingly.

Also you can refer to the following links to get an idea and learn steps to create a 3D model

<https://www.youtube.com/watch?v=4BMzOxIX8hc>

<https://www.youtube.com/watch?v=EPStja86hsM>

Note:

Properly rename the project with Student Name and Class. Each student will have to submit the printout of the full window screenshot of the 3D model created by him/her. Inappropriate work without a student name and class on the project as project name will not be accepted.

ART & CRAFT



Activity Name - Clay house with Garden

Material Required

- . Air Dry clay
- . Cardboard
- . Scissors
- . Fevicol

Link : <https://pin.it/3yLoL4URR>

